

COLORE COLOUR - ЦВЕТ	FONDO PRIMER - ГРУНТОВКА	FINITURA FINISH - ОТДЕЛКА
101 - RFL ... 150 - RFL	1 X IMPRONTE MID BIANCO 	2/3 X RIFLESSI 



J COLORS S.p.A.
Via Settembrini, 39 - 20020 Lainate (MI) - Italy
Tel. + 39 02 937541 - Fax + 39 02 9374114
www.jcolors.com - info@jcolors.com

www.tattoovernici.it

TATTOO

CREATIVITÀ ALL'INFINITO



RIFLESSI

CALCE A SPATOLA

RIFLESSI

Le superfici levigate e brillanti fanno della calce a spatola una delle finiture decorative più diffuse e apprezzate per valorizzare gli ambienti di pregio, in abitazioni civili, uffici, alberghi, esercizi commerciali.

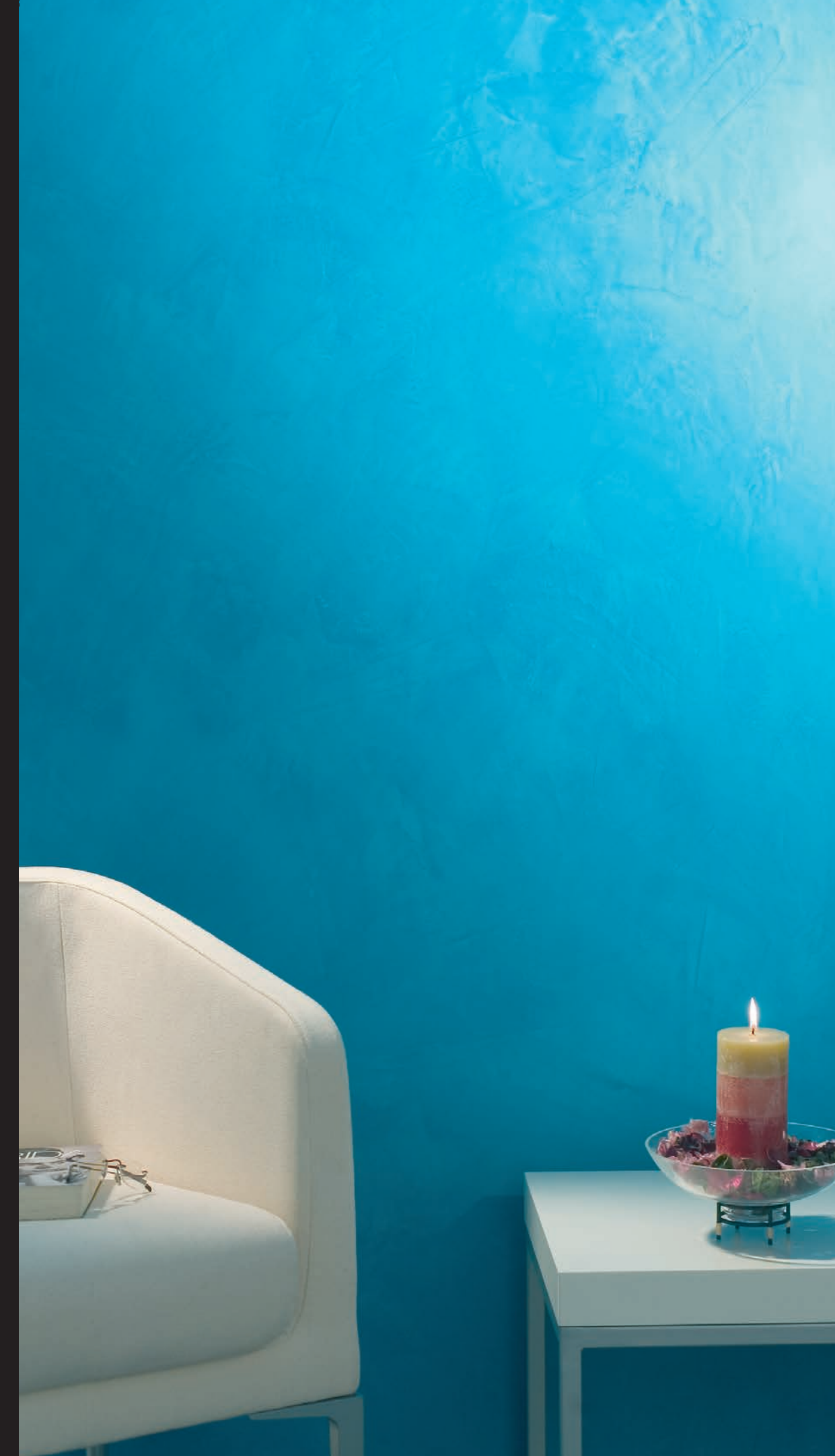
Con Riflessi, Tattoo reinterpreta la calce a spatola classica in chiave contemporanea, proponendo alternanze di aree lucide e semiopache e superfici lavorate che giocano con la luce per creare suggestivi chiaroscuri.

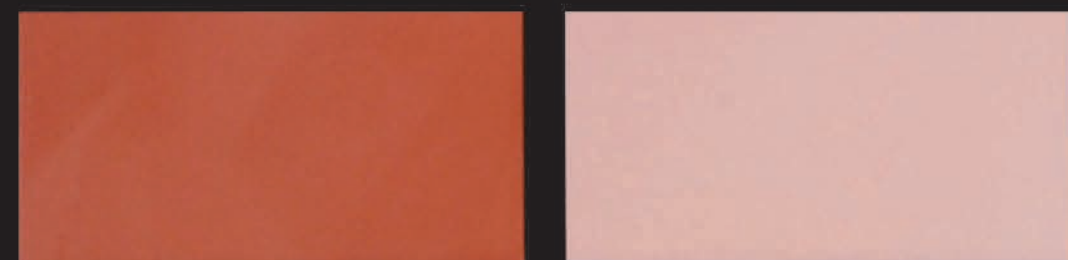
Smoothed, bright surfaces make limewash one of the most popular, widely-used decorative finishes for the optimisation of prestigious ambiances in homes, offices, hotels and shops.

With Riflessi, Tattoo reinterprets classic limewash in a contemporary key, proposing alternations of glossy areas with semi-matte and worked surfaces that play with the light to create evocative light and shade effects.

Благодаря гладкости и гляncу, которые приобретает поверхность за счет декоративной шпатлевки, этот продукт является одной из самых распространенных и высоко ценимых декоративных отделок; она способна подчеркнуть красоту любого помещения, будь то комната дома, офис, гостиница или же торговый зал.

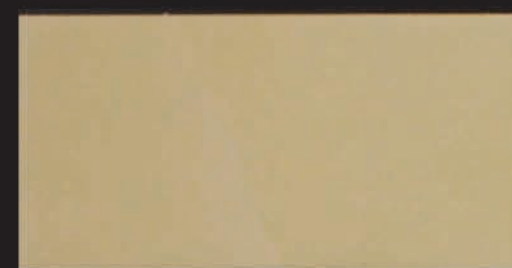
Благодаря Riflessi «Tattoo» заново открывает классическую декоративную шпатлевку, предлагая ее в новом, современном ключе: глянцевые и матовые участки сменяют друг друга, а характерные для этой отделки оптические эффекты создают удивительную игру светотени.





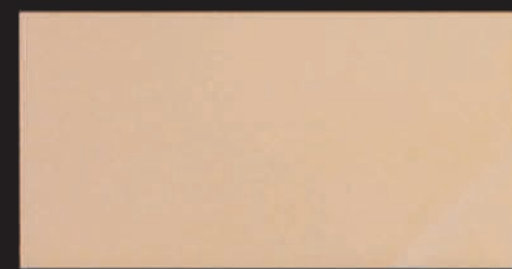
101-RFL

102-RFL



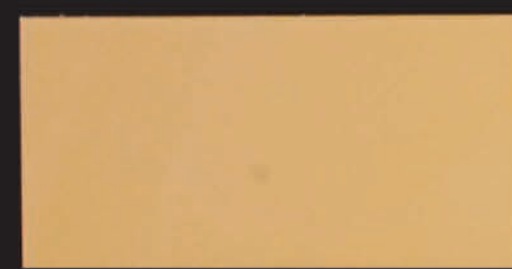
103-RFL

104-RFL



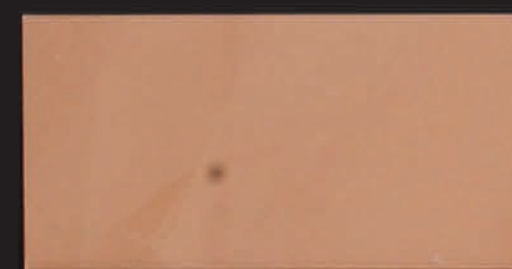
105-RFL

106-RFL



107-RFL

108-RFL



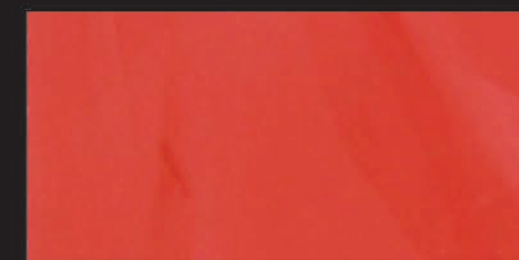
109-RFL

110-RFL

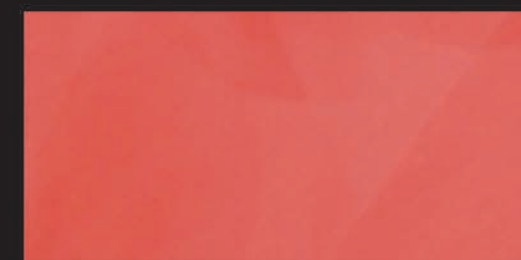


111-RFL

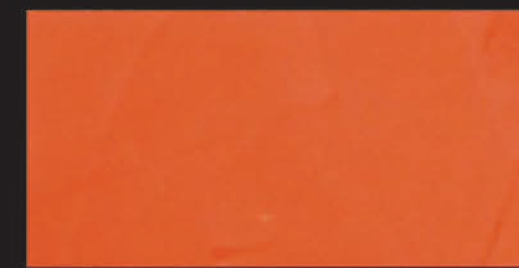
112-RFL



113-RFL



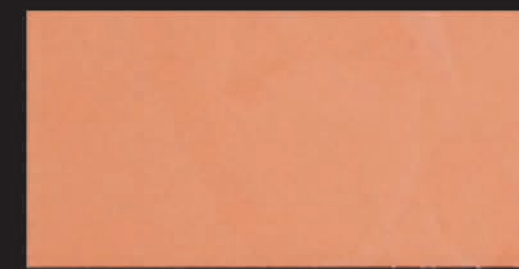
114-RFL



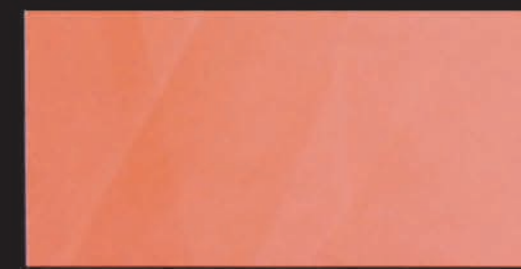
115-RFL



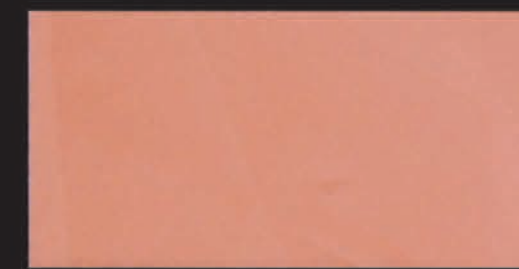
116-RFL



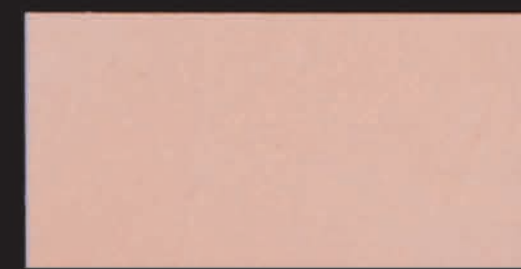
117-RFL



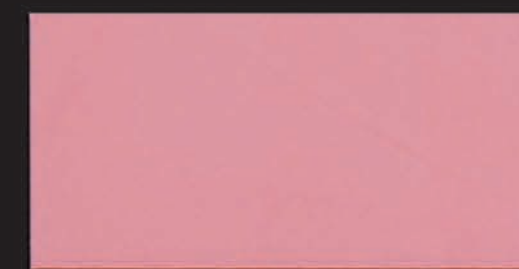
118-RFL



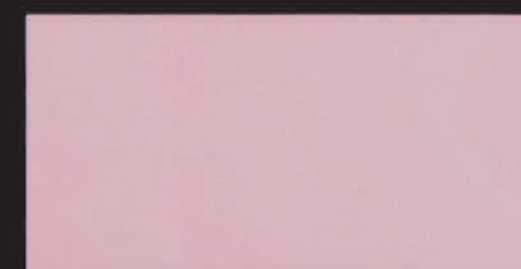
119-RFL



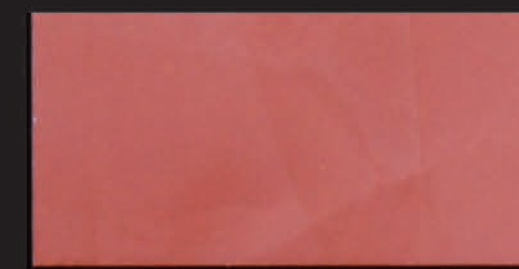
120-RFL



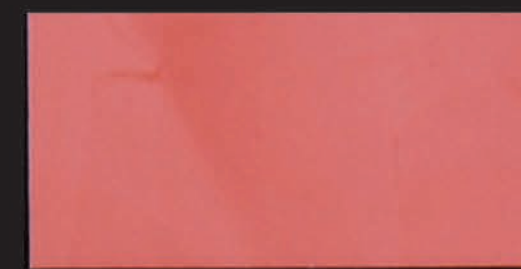
121-RFL



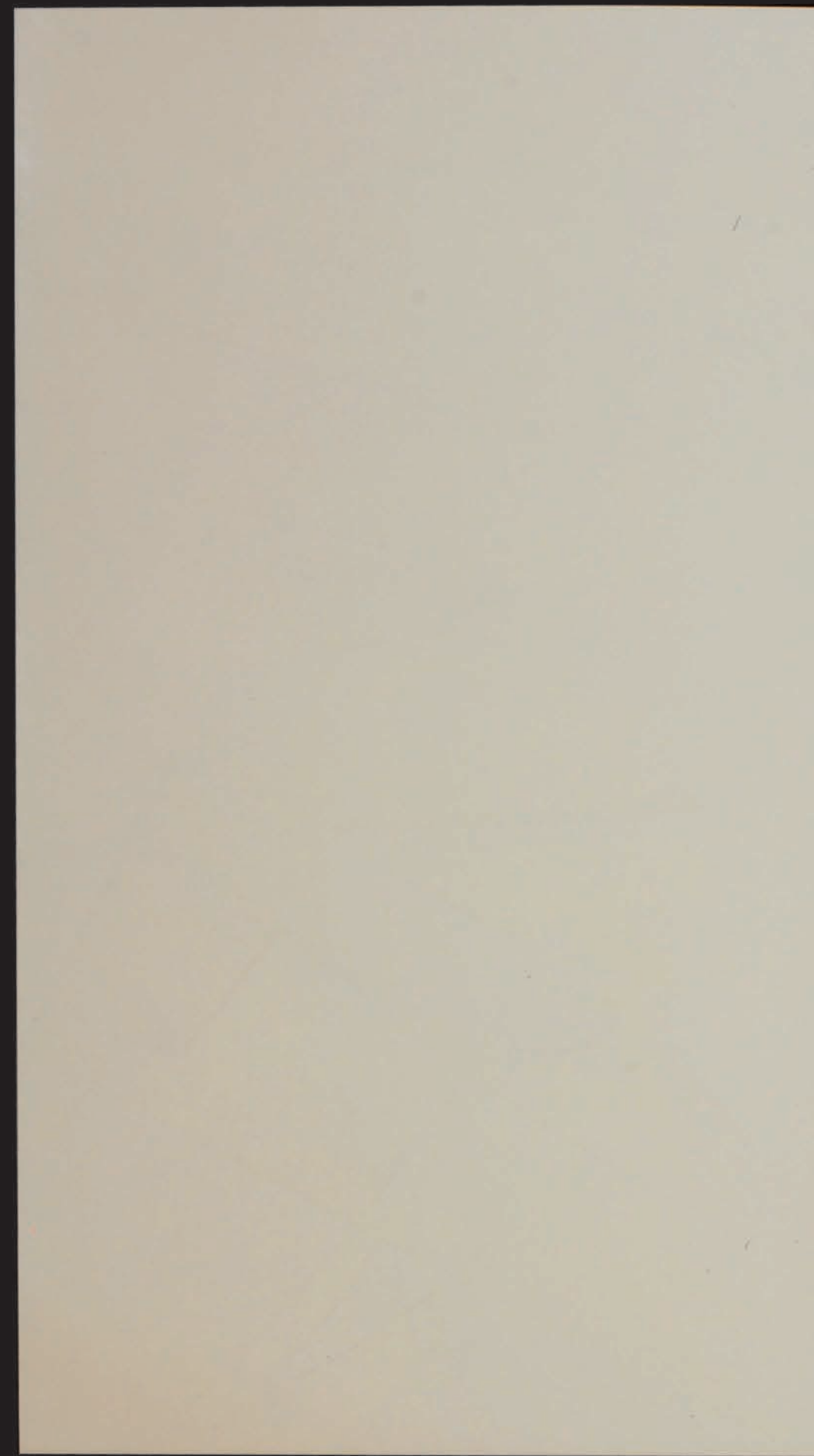
122-RFL



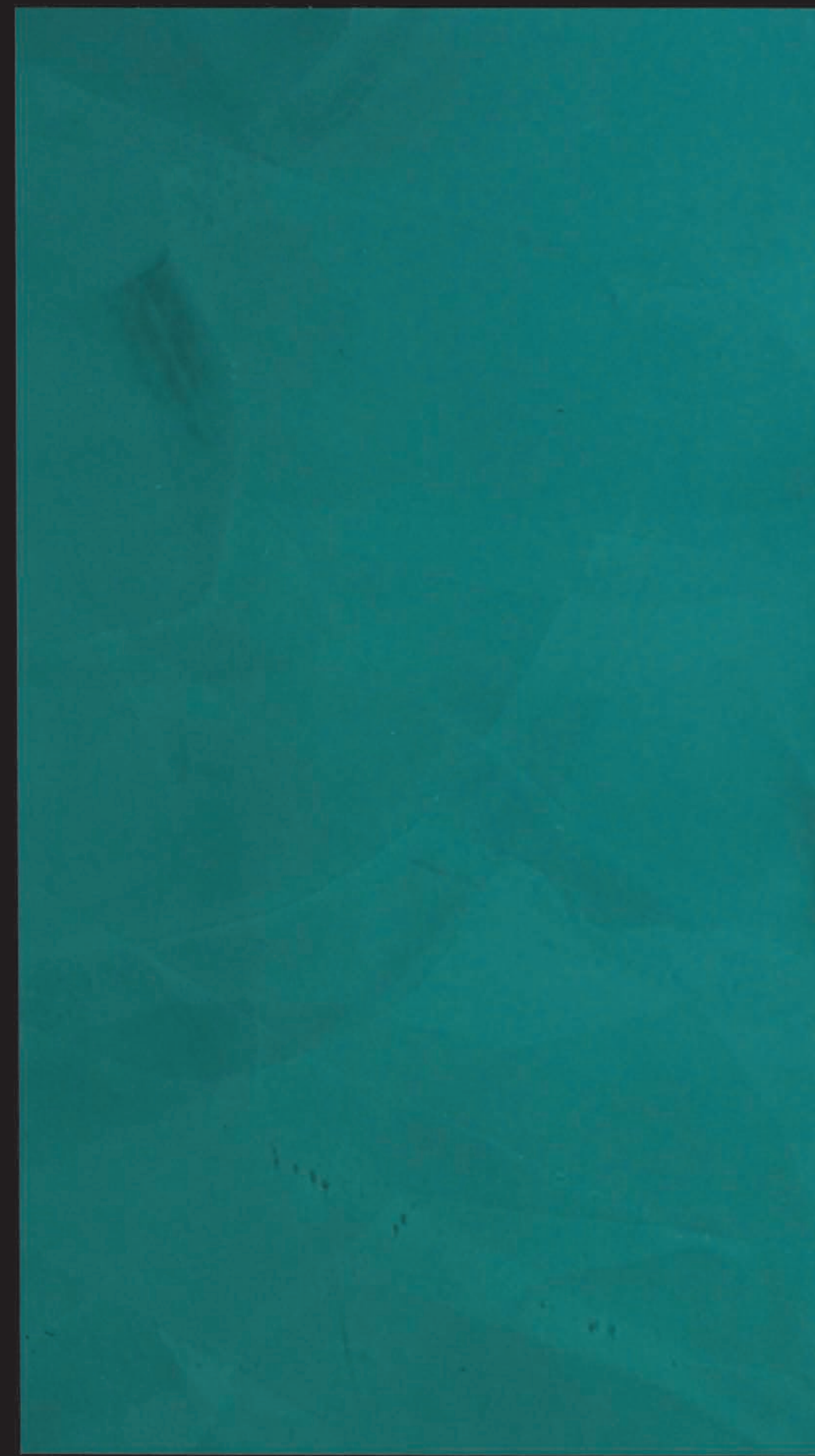
123-RFL



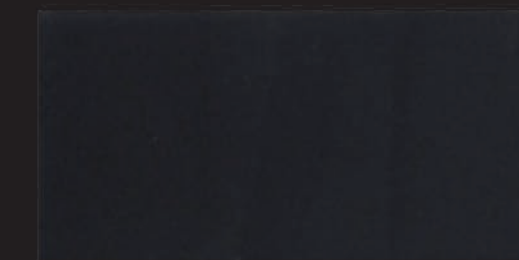
124-RFL



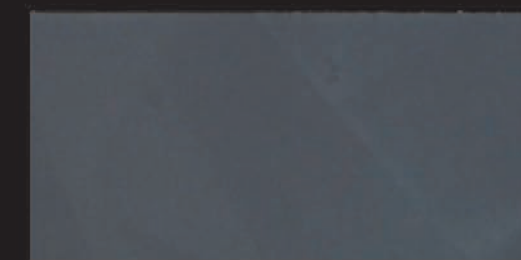
125-RFL



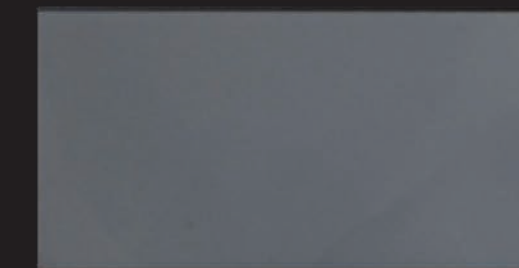
126-RFL



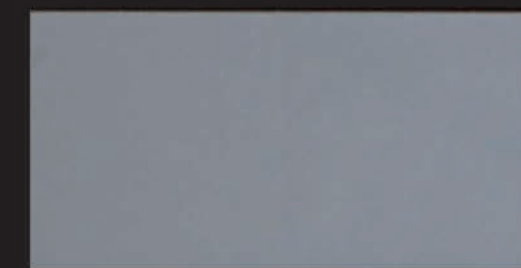
127-RFL



128-RFL



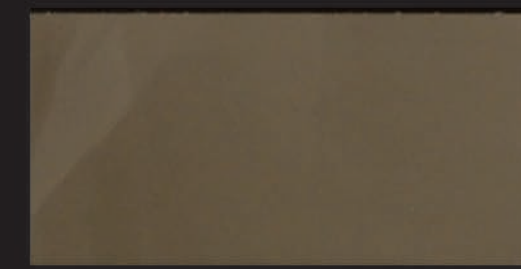
129-RFL



130-RFL



131-RFL



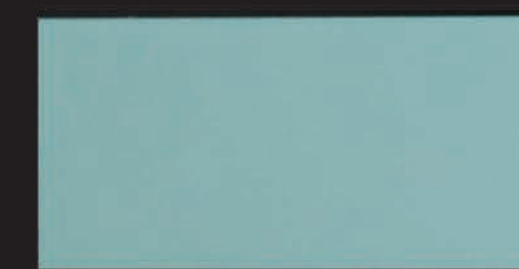
132-RFL



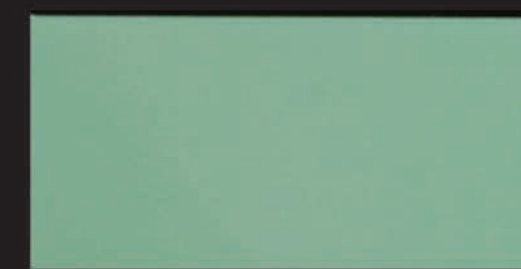
133-RFL



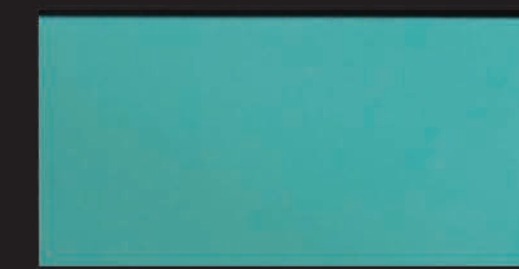
134-RFL



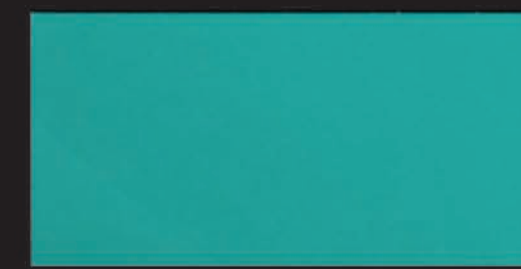
135-RFL



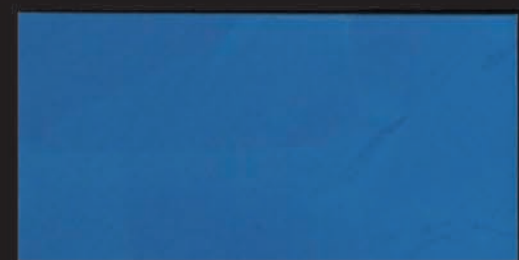
136-RFL



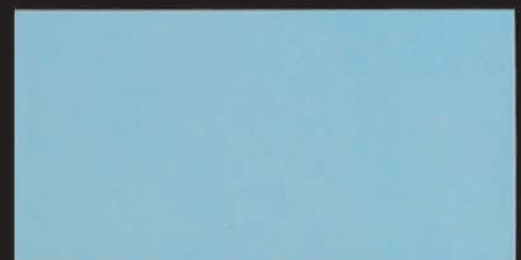
137-RFL



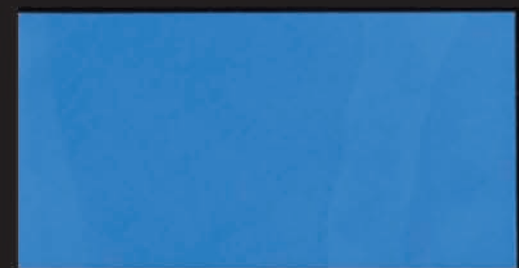
138-RFL



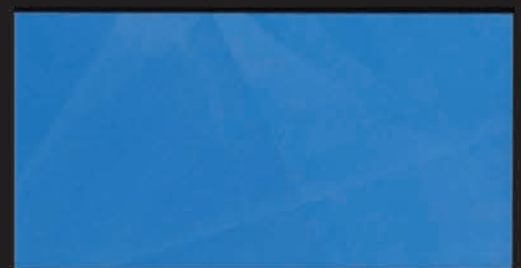
139-RFL



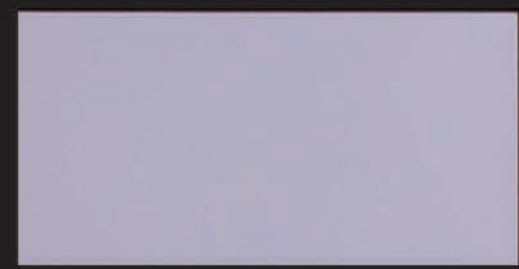
140-RFL



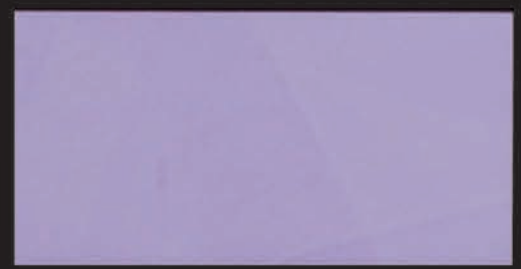
141-RFL



142-RFL



143-RFL



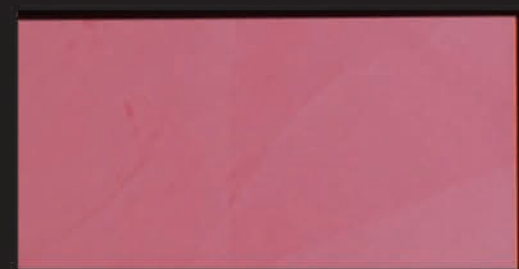
144-RFL



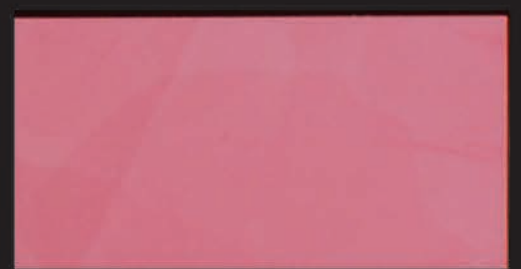
145-RFL



146-RFL



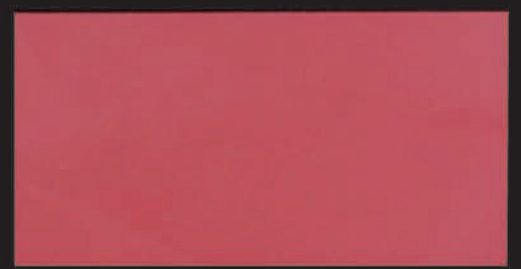
147-RFL



148-RFL



149-RFL



150-RFL